



Bruce Mungle
 +27 731370304
 bruce@compropballito.co.za

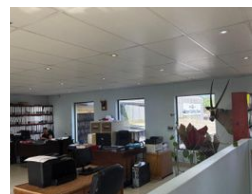
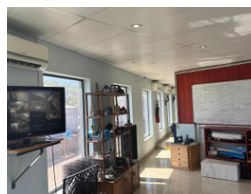
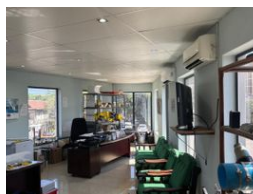
Contact ComProp Ballito

032 9462727

Suite 1 ComProp House Kyalami Park,
 Douglas Crowe Avenue,
 Ballito Business Park,
 4420



Web Ref COC01S



R10,000,000

Monthly Rates R5,300 Excl. VAT

0 8

Freestanding Warehouse / Factory

This free hold property at the entrance to Shakas Head Industrial Park features beautiful air-conditioned office space of 289m², reception area and toilet as well as a mezzanine area of 398m², warehouse of 635m², 95m² ablution block and various storerooms. The warehouse is equipped with a 4-meter roller shutter door and three-phase power with 100 amps.

There are 8 parking bays available and access to a maximum of 10-ton vehicles. Easy access to the N2 and the R102. A 50kVA

Features

Zoning Industrial

Interior
 Air Conditioning Yes
 Power 3 Phase Yes
 Power Amps 100

Exterior
 Open Parking Bays 8

Sizes
 Floor Size 1,500m²

Extras
 Security Gate

