



Tracey Padayachee
0782227426
tracey@compropballito.co.za

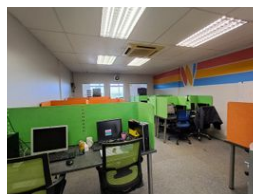
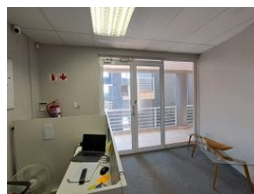
Contact ComProp Ballito

032 9462727

Suite 1 ComProp House Kyalami Park,
Douglas Crowe Avenue,
Ballito Business Park,
4420



Web Ref WA4R



R12,000 pm

Gross Monthly Rental R12,000 Excl. VAT

1 0

First Floor Office/Retail Space with Beautiful Views

Warne House offers a prime commercial office/retail location in the heart of the Ballito Business Park, just a short walk from the Lifestyle Centre. Boasting picturesque views over Zimbali and the Indian Ocean, this space is perfect for a variety of business ventures.

Current tenants include professional firms, as well as medical and beauty establishments. Recently installed solar panels provide backup power. Price excludes VAT. Features: Air conditioning, carpeted floors, kitchenette, and a balcony. Access via both elevator

Features

Zoning Commercial

Interior

Air Conditioning Yes

Exterior

Security Yes
Basement Parkings 1

Sizes

Floor Size 67m²

Extras

Security Gate Air Conditioner Balcony

