



**Tracey Padayachee**  
0782227426  
tracey@compropballito.co.za

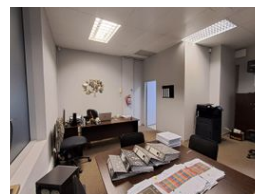
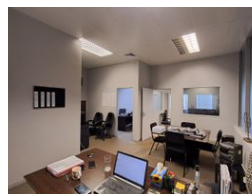
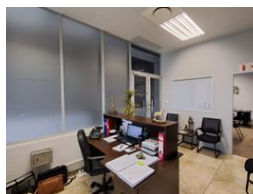
Contact ComProp Ballito

032 9462727

Suite 1 ComProp House Kyalami Park,  
Douglas Crowe Avenue,  
Ballito Business Park,  
4420



Web Ref SI13R



R9,000 pm

Gross Monthly Rental R9,000 Excl. VAT

 1  0

### Second Floor Office – Ballito Business Park

A-Grade second floor office located in the prestigious Silverstone Way development just behind the Lifestyle Centre in Ballito. The complex offers controlled security and secure basement parking. Tenant mix includes ground floor retail with decor, IT and beauty outlets and various professional business enterprises on the upper floors.

Key Features: Air-conditioned, tiled reception area, four carpeted offices, elevator and stair access, intercom system, kitchen,

### Features

**Zoning** Commercial

**Interior**  
Air Conditioning Yes

**Exterior**  
Security Yes  
Basement Parkings 1

**Sizes**  
Floor Size 77m<sup>2</sup>

**Extras**  
Security Complex Air Conditioner

